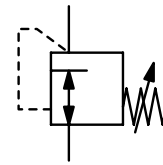


<b>Description</b>	Piston-operated high pressure regulator HP500R and diaphragm-operated HP500 are marked by high flow and great reliability.	
<b>Media</b>	compressed air, non-corrosive gases or liquids	
<b>Supply pressure</b>	max. 300 bar	
<b>Accuracy</b>	at supply pressure variation of 7 bar: < 120 mbar pressure deviation	
<b>Adjustment</b>	by black plastic knob	<b>Leakage rate</b> < 2x 10 <sup>-8</sup> mbar l/s He
<b>Relieving function</b>	non-relieving, optionally relieving	<b>Gauge port</b> 1/4" NPT for inlet / outlet pressure, shifted by 70°
<b>Mounting position</b>	any	
<b>Temperature range</b>	-40 °C to 75 °C / -40 °F to 167 °F	
<b>Material</b>	Body: brass, optionally stainless steel (spring cage brass), stainless steel completely on request	
	Seals: FKM	
	Spring cage: nickel-plated	Valve seat: Teflon PFA
	Inner valve: stainless steel	Diaphragm: stainless steel



SST

1/4" NPT, P<sub>1</sub>: 300 bar  
0.1 ... 1.7/35 bar

Dimensions			K <sub>v</sub> -value	Flow rate		Connection thread	Pressure range	Order number
A	B	C		m <sup>3</sup> /h*	l/min*			
mm	mm	mm	(m <sup>3</sup> /h)			NPT	bar	

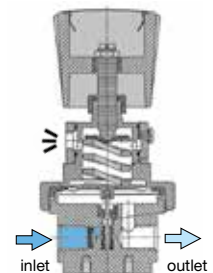
High pressure regulator 300 bar							non-relieving, brass	HP500
50	137	19	0.05	90	1500	1/4" NPT	0.1 ... 1.7	HP500-002
							0.1 ... 3.5	HP500-004
							0.1 ... 7.0	HP500-007
							0.2 ... 17	HP500-017
							0.3 ... 35	HP500-035



HP500

## Special options, add the appropriate letter

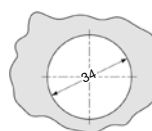
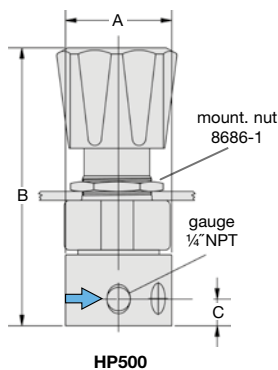
relieving		HP500-...R
body made of SST		HP500-...S
free of grease and oil	suitable for oxygen, P <sub>1</sub> < 200 bar	HP500-...L
for liquids	w/o filter at inlet, valve seat of Vespel	HP500-...W
brass pressure gauge	for brass body, inlet side	HP500-...HM
	for brass body, outlet side	HP500-...GM
SST pressure gauge	for stainless steel body, inlet side	HP500-...H
	for stainless steel body, outlet side	HP500-...G



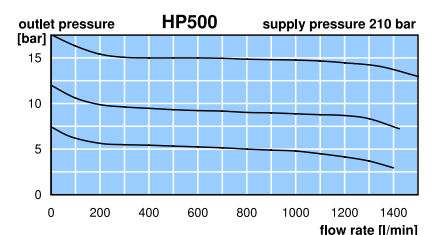
cross-section

## Accessories, enclosed

mounting nut	for panel mounting, made of stainless steel	8686-1
--------------	---	--------



panel cut-out



\*1 at 240 bar supply pressure and 30 bar outlet pressure

